



# B3 BENCHMARKING

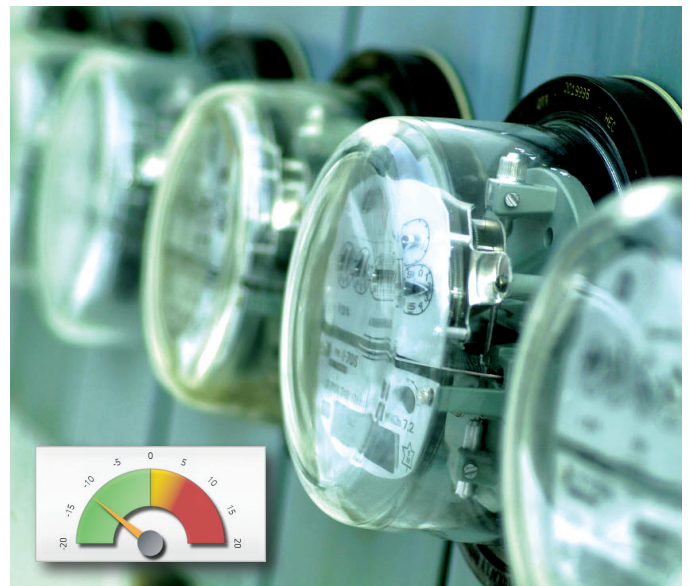
advanced metrics for rating buildings

## Benchmarking Helps Manage Energy Costs

There's a saying, "You can't manage what you don't measure," and it rings true when you're thinking about ways to save energy. Benchmarking is a highly practical way to measure energy use in your buildings and is the first step in managing energy costs.

### 4 Reasons to Benchmark:

1. Benchmarking helps cities, counties, schools, and state government identify low or no-cost improvement opportunities.
2. Benchmarking can help you demonstrate to others the value of your energy efficiency projects and show progress.
3. Building benchmarking is often a requirement for energy-related funding opportunities available to your community.
4. Benchmarking your buildings is a Best Practice Action for the Minnesota GreenStep Cities program.



B3 allows you to compare the performance of your buildings to one another and to your peers.

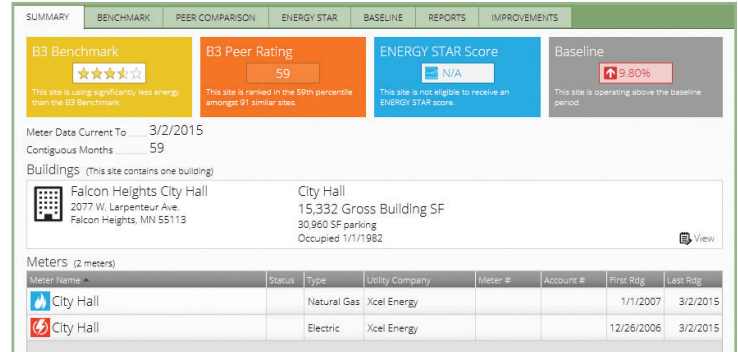
### What is B3 Benchmarking?

- B3, which stands for Buildings, Benchmarks, and Beyond, is a robust online tool for tracking and managing energy use in public buildings.
- B3 helps guide decision making by showing which buildings would benefit most from energy efficiency improvements. It also allows you to monitor progress as you invest in your community's infrastructure.
- B3 Benchmarking makes it easy for you to see how well your buildings are performing so you can plan effectively, optimize resources, ensure occupant comfort, and advance your mission.

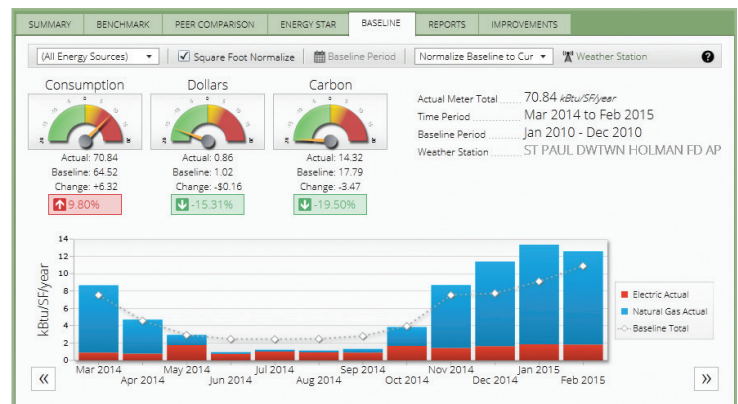
# An Overview of B3 Features



- **Summary Tab:** This high level view provides organizational information and the completeness of your B3 data.
- **Benchmarking Tab:** Uses the engineering model of your building to show the Benchmark Index Ratio. This Ratio shows which buildings could see the most energy savings.
- **Peer Comparison Tab:** Allows you to see how your sites compare to other sites within the B3 Benchmarking database.
- **Energy Star Tab:** Allows you to compare whether your buildings are consuming more or less energy than a similar buildings nationwide by obtaining an ENERGY STAR rating.
- **Baseline Tab:** Allows you to compare how your buildings are performing over time.
- **Improvements Tab:** Allows you to set targets, both relative and absolute, for your entire organization and for buildings you manage.
- **Reports Tab:** Allows you to visualize the energy performance of an organization or site for multiple time frames for all fuel sources: in dollars, carbon dioxide emissions, native units, or kBtus. kBtu/SF/Year is a very important number to know. It's like the MPG for your car, but for your building.
- **Water Mode Overview:** Allows you view and manage your water consumption at an individual site or organization. Water mode also has Summary, Baseline, and Reports tabs.
- **Exporting:** Any view or report can be exported for use in Excel and other programs.



The Summary Tab show the B3 Benchmark, B3 Peer Rating, ENERGY STAR Score, and Baseline performance. It also shows when electric meter data was last entered.



The Baseline Tab allows you to compare how buildings are performing over time with metrics for energy consumption, energy dollars, and carbon emissions.

## How to Get Started

- Contact Pete Lindstrom with questions about getting started: [plindstr@umn.edu](mailto:plindstr@umn.edu) or 612-625-9634
- CERTs has a resource page for new and existing B3 users: [www.cleanenergyresourceteams.org/B3](http://www.cleanenergyresourceteams.org/B3)
- The developers of B3, The Weidt Group, also have web resources: [www.mn.b3benchmarking.com](http://www.mn.b3benchmarking.com)